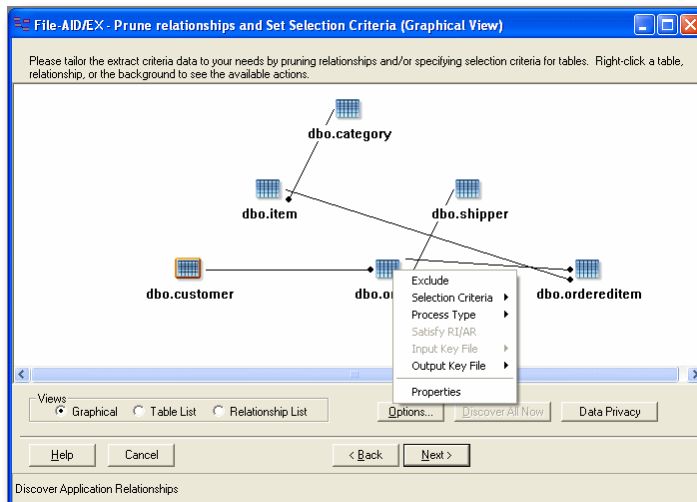




**Data Generation:** With this technique, you can generate fictitious data from scratch or from some other source.

**Translation:** This is a very effective way to replace values consistently with fictitious, readable values, like names (e.g., replacing Rosemary with Susan) or birthdays (e.g., month and day only so that the original birth year is retained).

To help create and manage privacy specifications, File-AID/EX includes a workbench that allows users to define, update and manage privacy criteria in a commonly shared repository. Once defined, privacy specifications can be applied in the File-AID/EX Related Extract component.



*With File-AID/EX, it's easy to include or exclude RI or AR table relationships from the extract and load process.*

## File-AID/EX Benefits

Compuware's File-AID/EX:

- offers a comprehensive test data management solution in a single tool for all your data needs
- eliminates the need to write SQL or special programs, enabling simple, accurate and secure access to distributed data
- creates meaningful, manageable, disguised test data with minimal expertise
- provides self-sufficiency for developers
- ensures the quality and reliability of your application and data
- leverages your current File-AID investment.

“We found the Data Privacy features in Compuware File-AID/EX very useful when working directly with databases. We were able to scrub data and disguise our test databases with ease. We were also able to populate all the related tables, and the generated XMLs for the data scrub could be exported and used by other users.”

— Ssonko Mbatha, Systems Engineer, QA Department,  
Prumerica Financial

## EASILY SUBSET DATA WHILE MAINTAINING DATA RELATIONSHIPS

With File-AID/EX, users need minimal database expertise to extract related subsets of data from one database and transform and load them into another. They simply specify the selection criteria and transformation rules, and File-AID/EX does the rest — extracting the data derived from the relationships maintained by the database via referential integrity or external application relationships. Automatically creating meaningful subsets of relational test data from production databases saves disk space and time in test execution.

In addition, when specifying privacy requirements, the Data Privacy Manager provides the ability to disguise data within the related extract process, at the field or record level, for all supported databases. Disguised values will be propagated automatically across related tables while maintaining database Referential Integrity (RI) and Application Relationships (AR).

## USE SPREADSHEET-LIKE ACCESS TO VIEW AND EDIT DATA

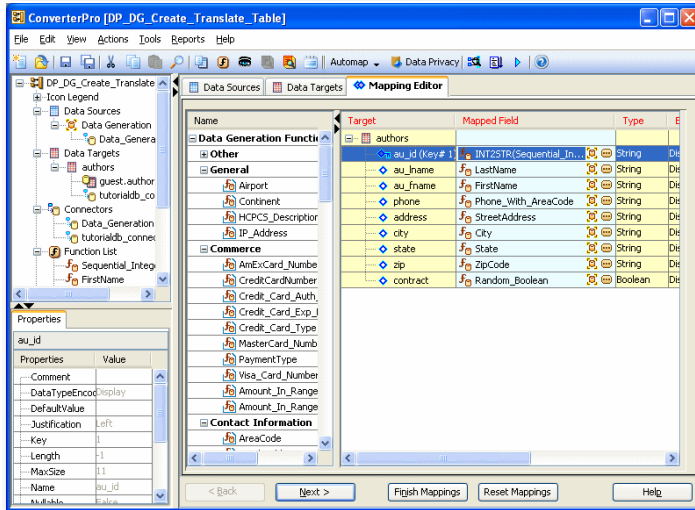
Application reliability is a constant concern in IT organizations. Application failures are often data-related. With File-AID/EX, IT teams can analyze the cause and effect of data-related application failures more thoroughly, so they can fix errors fast. Its spreadsheet-like access provides easy edit-and-browse of the database using table structures defined in the database catalog. When editing related tables, a single click brings up information for all rows related to the driving table. Users avoid having to code SQL or write one-time programs to manipulate data. File-AID/EX lets the team remain focused on analyzing and correcting the data rather than writing code to access it.

## CREATE REUSABLE ASSETS

File-AID/EX stores all criteria for converting, subsetting, reformatting, comparing, extracting and loading data. Users can easily access the criteria to re-create or revalidate test data — creating a repeatable process for consistent testing.

## ACCESS DATA CONSISTENTLY ACROSS MULTIPLE ENVIRONMENTS

Integrating client/server web-based applications with legacy applications and data is easy with File-AID/EX. It supports DB2 UDB, Sybase, XML, VSAM, IMS and DB2 for z/OS. Offering the widest range of database support in the industry, File-AID/EX helps IT teams create and maintain business-critical applications with minimal expertise in any specific data environment.



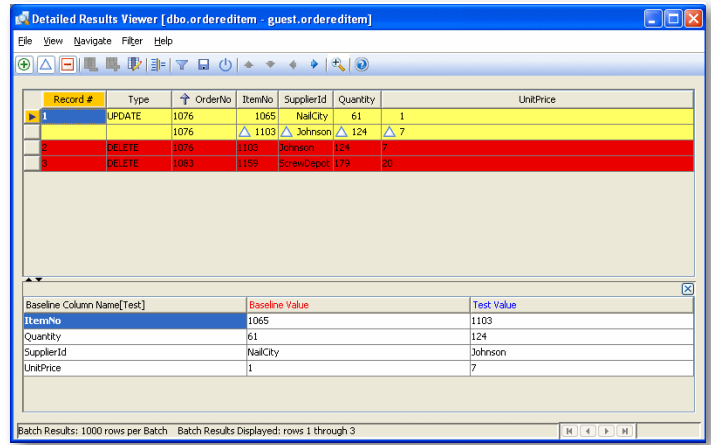
Required data values can be easily generated by dragging the desired functions from the list on the left to the fields on the right.

## COPY, REFORMAT AND CONVERT MULTIPLE DATABASE/FILE TYPES WITH EASE

File-AID/EX requires no specific database or programming knowledge to copy, transform and convert a range of data types and formats for mainframe and distributed environments. For example, File-AID/EX can convert data from VSAM to Oracle or transform data from one Microsoft SQL Server table to another. A graphical user interface allows developers and QA teams to easily map multiple data sources and targets. File-AID/EX provides the same interface regardless of data environment, eliminating the need to learn multiple utilities. Users can split or concatenate fields, replace values based on lookup tables, change data formats and perform many other powerful functions.

## GENERATE TEST DATA

File-AID/EX provides an easy method for creating meaningful test data with minimal effort or technical expertise. Users can generate millions of unique names, ZIP codes, area codes, cities, states and other values using a simple drag-and-drop method. Pre-built data generation functions and a data library are also provided to populate the required data.



File-AID/EX automatically validates XML data, schema and related data results and displays differences in a color-coded comparison report.

## AUTOMATE DATABASE COMPARISONS TO VALIDATE TESTS

Now there's a more efficient and accurate way to compare relational tables, database schemas, XML, ASCII or flat files. When comparing test data results to baseline data, File-AID/EX can compare specific columns or rows in the tables so users focus solely on the data changed by the test. File-AID/EX groups and compares related tables. The color-coded comparison report, available online or in print, identifies the exact data inserted, deleted or changed. File-AID/EX can also compare database stored procedures, triggers and schemas.

## VALIDATE XML DATA ACCURACY

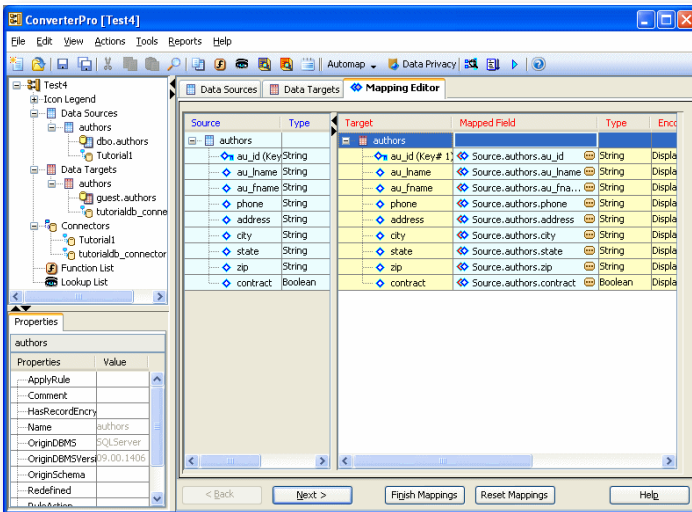
File-AID/EX gives IT users the XML edge to develop web-based applications that are functional, reliable and open, allowing them to integrate easily with customers, suppliers and employees. The File-AID/EX GUI lets developers and testers transform complex relational databases into accurate streams of XML data. They can compare differences between two XML streams, or between XML streams and relational databases. The color-coded comparison report identifies the exact XML data inserted, deleted or changed. This automated process of managing and testing XML data accelerates B2B integration by allowing users to verify the accuracy and reliability of XML results on the spot.

## FILE-AID/EX CLIENT EDITION

The File-AID/EX Client Edition is the base product and includes the following components:

- ConverterPro
- ComparePro
- Related Extract and Related Loader
- Data Generation Facility (optional)
- Data Privacy Manager
- Data Editor.

All processing is done at the client level.



The ConverterPro component provides powerful data conversion and transformation functionality supporting a broad range of data types, including support for mainframe data.

#### FILE-AID/EX SERVER EDITION

This edition offers Server Engines for the ConverterPro, ComparePro, Related Extract and Related Loader. The Server Edition is ideal for managing a test environment where data volume is large and performance is essential. With this edition, you can leverage the power of the server for efficiency and speed. File-AID/EX Client Edition is required to run the Server Edition engine component.

#### FILE-AID/EX ENTERPRISE EDITION

This edition offers direct access to mainframe data supporting:

- VSAM
- QSAM
- IMS
- DB2 for z/OS
- File-AID/RDX DB2 extracts.

The Enterprise Edition is ideal for managing a test environment where access to mainframe data is needed. File-AID/EX Client and Server editions are both required for running the Enterprise Edition mainframe access module.

To learn more about Compuware File-Aid/EX, visit:

[compuware.com/File-AID](http://compuware.com/File-AID)

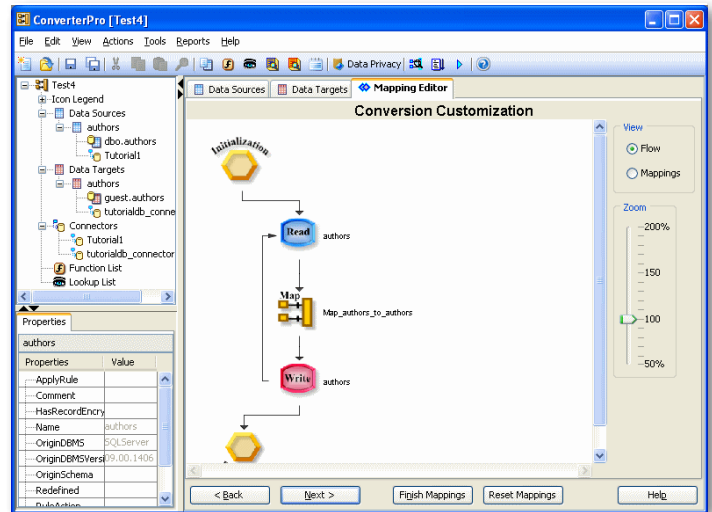
Compuware Corporation, the technology performance company, provides software, experts and best practices to ensure technology works well and delivers value. Compuware solutions make the world's most important technologies perform at their best for leading organizations worldwide, including 46 of the top 50 Fortune 500 companies and 12 of the top 20 most visited U.S. web sites. Learn more at: [compuware.com](http://compuware.com).

**Compuware Corporation World Headquarters** • One Campus Martius • Detroit, MI 48226-5099

© 2011 Compuware Corporation

Compuware products and services listed within are trademarks or registered trademarks of Compuware Corporation. Oracle and Java are registered trademarks of Oracle and/or its affiliates. Other names may be trademarks of their respective owners.

08.11 19925



The ConverterPro component provides a graphical view of your conversion specification and allows you to customize it from this view.

#### File-AID/EX Highlights

File-AID/EX lets users:

- access and execute File-AID/EX objects from a commonly shared repository
- copy, reformat and convert data between disparate heterogeneous data types
- compare differences in triggers and stored procedures in Oracle, Sybase, DB2 UDB and Microsoft SQL Server
- access multiple data types for both mainframe and distributed environments
- extract and load related subsets of data from multiple databases
- apply selection criteria for extracting, copying or converting subsets of data
- automatically compare the differences between two sets of database tables, schemas or ASCII files
- compare XML data and XML streams to relational database data
- edit data with the look and feel of a spreadsheet.

