

## WEB SERVER APPLICATION FOR ANALYZING COMPUWARE STROBE PERFORMANCE DATA

iStrobe, a Compuware web server application, works with Strobe to allow IT professionals to measure and analyze application performance and quickly pinpoint the source of application inefficiencies. Both novice and expert users can view and analyze Performance Profile information interactively using a standard browser such as Internet Explorer. iStrobe is easy to use and install. iStrobe's two-pane viewing option makes navigation and profile analysis easier.

With analytical aids and a familiar interface, iStrobe:

- simplifies performance analysis of applications using Java, CICS, DB2, DB2 DDF, IMS, ADABAS, CA Gen, CA-IDMS, WebSphere Application Server, WebSphere MQ, UNIX System Services, and applications written in COBOL, PL/I, C/C++, NATURAL and ADS/O
- supplies detailed system service module descriptions and recommendations for performance improvement
- identifies the individual SQL statements and DB2 system services that cause excessive CPU time or wait time
- provides DB2 catalog statistics and EXPLAIN data for evaluating DB2 activity and access path information
- offers recommendations for changing SQL statements and DB2 database definitions to improve application performance
- offers extensive help and performance hints for system modules, CICS resources and CA Gen.

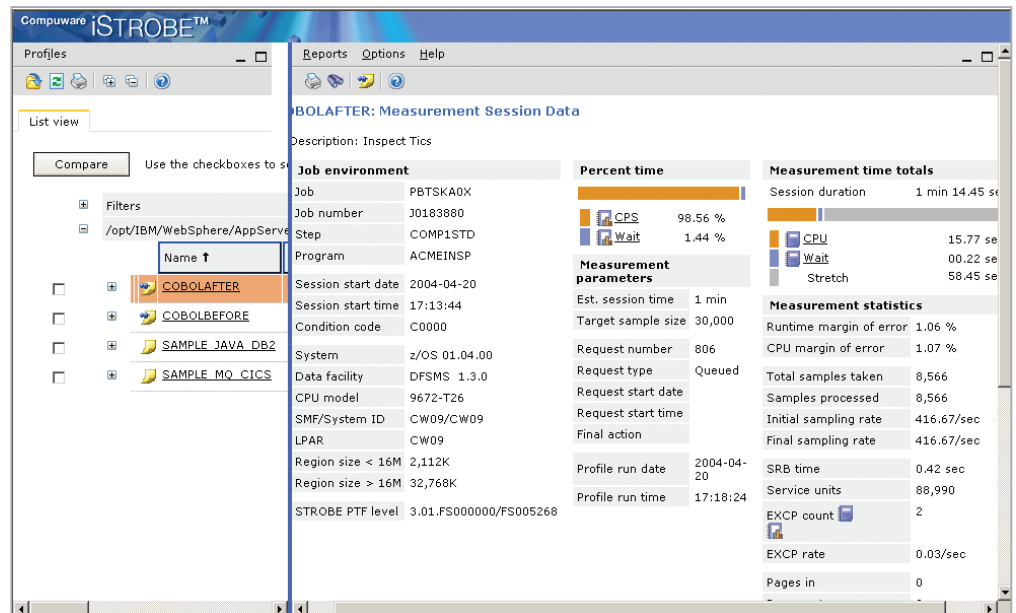


Figure 1: The "CPU Usage by NATURAL" program report specifies which NATURAL 4GL programs are responsible for CPU activity among the statements that make up the NATURAL 4GL programs. The top level contains NATURAL program data, and the next level shows NATURAL program statement data.

## LOCATE APPLICATION INEFFICIENCIES QUICKLY

Users can quickly locate application inefficiencies with the iStrobe Top Resource Consumers Report Reports. These reports identify the most resource-consumptive system service routines (CPU, Wait, EXCPs), files and user program statements, allowing you to drill down directly to detailed reports. Our enhanced profile management functionality includes the ability to import, export and delete profiles, and create and store performance profile notes. You also can filter out low resource-consuming items with our resource threshold tailoring capability.

## MINIMIZE APPLICATION RESOURCE DEMAND

The iStrobe Resource Demand Distribution Report summarizes the use of CPU and I/O resources in the measured job step. A histogram provides an easy way to visually identify which tasks are resource-intensive.

## OBTAIN PERFORMANCE IMPROVEMENT RECOMMENDATIONS

Additional in-depth information on what a module does and how to reduce or eliminate the time spent in the module is available by clicking on the module name. Browse through the Module Help database for detailed system service module descriptions and recommended solutions to improve application performance. You can also add information about your own modules.

## TREND AND SUMMARY REPORTS

iStrobe provides Trend and Summary reports for all major subsystem components, including batch, CICS, DB2 and IMS. With iStrobe, you can now load your performance profile data into a Microsoft SQL Server, Oracle or DB2 database. Using Compuware's Data Mining Interface (DMI), you can use the new reports to view your data from a variety of perspectives. This allows you to follow trends, identify the best areas for your tuning efforts and isolate response time and CPU consumption problems. You can also create your own customized reports.

## WEB SERVICES API

iStrobe contains a Web Services API that can initiate a basic Add Active Strobe measurement and generate an iStrobe profile. The response is a URL pointing to the resulting iStrobe Performance Profile. Third-party monitor applications can now initiate a Strobe measurement automatically when performance issues appear.

## IDENTIFY RESOURCE-CONSUMPTIVE CICS TRANSACTIONS

iStrobe reports highlight resource-consumptive CICS transactions, summarizing all components of transaction response time, including CPU dispatch delay and suspend time, the number of times a transaction executed and the average service time. iStrobe provides extensive help and performance hints for system modules and CICS resources. As shown in Figure 2, users can identify how much of the CICS transaction response time is due to WebSphere MQ calls and then drill down for additional, detailed CICS and WebSphere MQ reports.

“iStrobe was the final deciding factor in choosing the Strobe products. It was obvious to me, after seeing how iStrobe considerably reduced our analysis and diagnosis time via easier navigation and hints/tips for improvements in development and production, that this was the solution we were looking for.”

— Nancy White, former CIO, Certegy

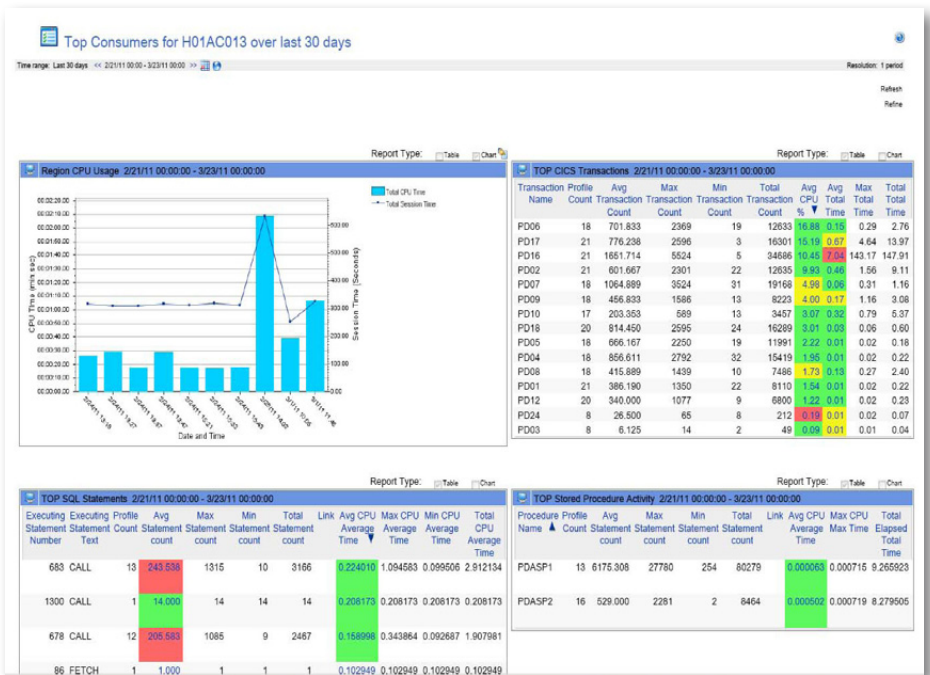


Figure 2: iStrobe displays how WebSphere MQ calls are impacting transaction response time.

“iStrobe gave us an easier user front-end, so we could really expand the use of Strobe.”

— David Sewalk, Senior Vice President, Business Solutions Development, Huntington National Bank

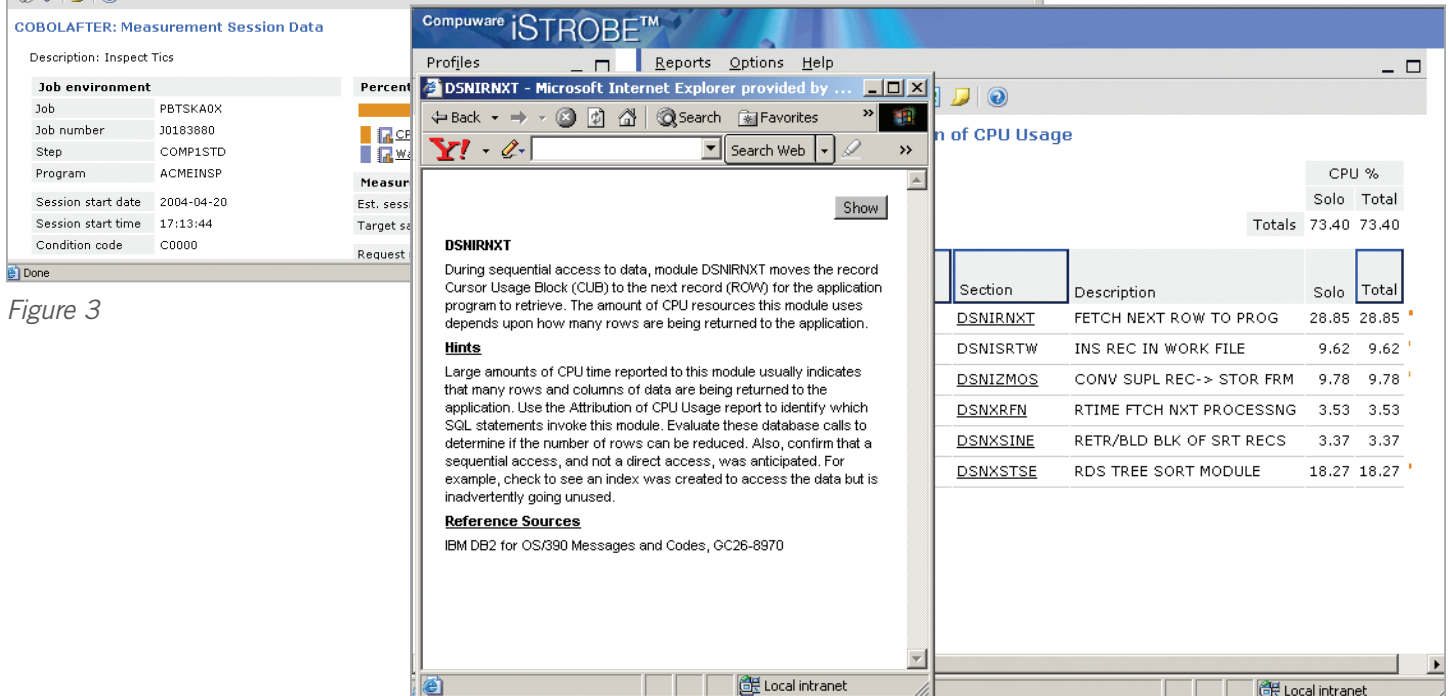
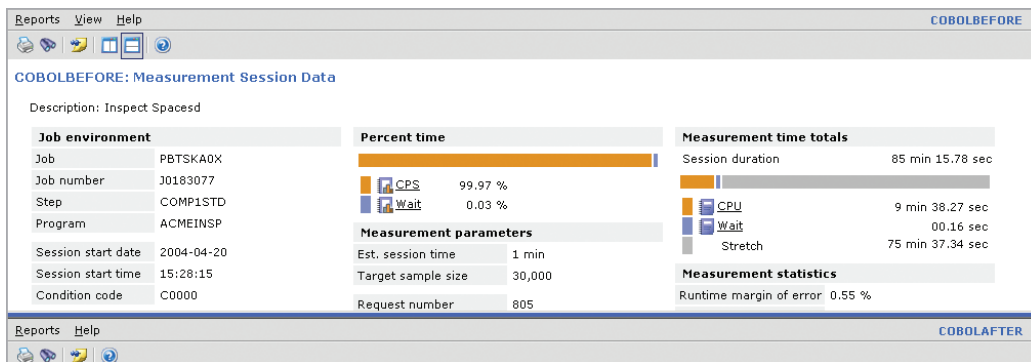


Figure 3

Figure 4

“It [iStrobe] has allowed us to get everyone involved with the entire tuning effort. There might have been maybe a dozen or so people that were able to effectively use Strobe before. But now with the addition of iStrobe, we have over 35 people trained on how to run Strobe and create profiles.”

— Dan Heasley, Senior Project Manager, Huntington National Bank

## APPLICATION PERFORMANCE MANAGEMENT SERVICES

Strobe customers are supported by a unique group of Compuware professionals known as Delivery Consultants. Delivery Consultants provide a variety of Application Performance Management (APM) services ranging from simple installation assistance to comprehensive performance tuning projects. They are experts in managing APM projects and are industry leaders in performance tuning. They have the latest knowledge of subsystems, technologies and APM products, and years of experience tuning mainframe applications.

The APM service offerings provide you with great value. The services are geared toward performance tuning and maximizing the return on your investment. Another strong point of Compuware’s service delivery is in our approach. The goal is to transfer knowledge and make you self-sufficient, maximizing the long-term value you get from our APM product line.

## APM PROBLEM SOLVER SERVICE

The APM Problem Solver service assists in identifying and resolving specific performance problems in mainframe-centric, business-critical applications.

Using Compuware's industry-leading products, experienced Compuware Delivery Consultants work closely with your IT personnel to measure an application's performance, identify performance improvement opportunities and make recommendations for implementing solutions.

With the APM Problem Solver services, organizations not only resolve problems quickly and effectively, but they gain the skills necessary to prevent future application performance degradation.

Compuware's Delivery Consultants are experts in managing APM projects. They have the latest knowledge of APM methodology and technologies and average 10 or more years experience in OS/390 and z/OS application or system programming, database administration and/or application performance tuning.

To learn more about Compuware iStrobe, visit:  
[www.compuware.com/strobe](http://www.compuware.com/strobe)

## APM PRODUCTS

### Z/OS OPERATING ENVIRONMENT

- Strobe
- iStrobe
- AutoStrobe

### SUBSYSTEM AND DATABASE ENVIRONMENTS

- Strobe *for CICS*
- Strobe *for DB2*
- Strobe *for IMS*
- Strobe *for WebSphere MQ*
- Strobe *for WebSphere Application Server*
- Strobe *for CA-IDMS*
- Strobe *for ADABAS/NATURAL*
- Strobe *for UNIX System Services*

### LANGUAGES

- Strobe *for Java™*
- Strobe *for COBOL*
- Strobe *for C/C++*
- Strobe *for PL/I*
- Strobe *for FORTRAN*
- Strobe *for CA-Optimizer*
- Strobe *for CA Gen*

Compuware Corporation, the technology performance company, provides software, experts and best practices to ensure technology works well and delivers value. Compuware solutions make the world's most important technologies perform at their best for leading organizations worldwide, including 46 of the top 50 Fortune 500 companies and 12 of the top 20 most visited U.S. web sites. Learn more at: [compuware.com](http://compuware.com).

**Compuware Corporation World Headquarters** • One Campus Martius • Detroit, MI 48226-5099

© 2011 Compuware Corporation

Compuware products and services listed within are trademarks or registered trademarks of Compuware Corporation. Oracle and Java are registered trademarks of Oracle and/or its affiliates. Other names may be trademarks of their respective owners.

11.04.11 20290pcg

